



Painless 802.1X Endpoint Configuration for Windows, iOS, and MAC OS X

Summary

Industry's first hosted cloud solution that enables painless 802.1X endpoint configuration.

Supports the industry's most popular operating systems, and supplicants:

- Windows XP/Vista/7
- MAC OS X
- iPhone/iPad OS
- SecureW2 Client
- and more

Centrally managed admin control and management

Easy-to-use web based end-user Wizard

Complete log of all changes

Adds new level of security to wireless and wired network access

Enables Microsoft NAP endpoint health checks

Automatic downloads of Avenda OnGuard Agents

Quick1X provides a simple way for organizations to upgrade the security of their wireless and wired networks. Past hurdles associated with the large-scale configuration of 802.1X capable endpoints are eliminated through the use of a centrally managed, browser based wizard, which translates into lower IT overhead. Minimal interaction for end-users reduces helpdesk calls and increases the adoption and adherence of more secure policies.

The Avenda Difference:

- Hosted Cloud Solution: Automated 802.1X or pre-shared key management without excessive IT interaction
- Compliance and Adherence: In addition to 802.1X configuration or refreshing of pre-shared keys, Quick1X ensures that endpoints are health check enabled
- Configuration Transparency: Users are removed from manually configuring protocol level 802.1X EAP methods like PEAP, TTLS, and TLS. The IT administrator can also install and configure trusted root certificate authorities, NAP services, and more

Security and Simplicity

Quick1X offers the unique ability to configure parameters for most Windows, Linux and Mac OS X devices. Wireless and wired network attributes, 802.1X supplicant information, and NAP health settings are pushed on the fly to the endpoint on their initial connection to a network. If needed, Quick1X can also push a new supplicant or health agent to the endpoint and install it. The end-user is guided through the download and authentication process, ensuring painless network connectivity.

Painless Endpoint Configuration

Configuring end-user devices for network access can be confusing, and historically means that most users will visit the helpdesk before spending much time with SSID's, IP addresses, WEP keys and such. The Quick1X wizard provides the ability to automatically configure each device for secure wireless or wired access within one minute. Incremental or mandated security configuration updates or fixes can also be made on the fly without the need for direct helpdesk interaction.

Devices supported include laptops, desktops, iPhones, Netbooks, and more. The Quick1X wizard can be downloaded or distributed via a web interface, USB, Active Directory GPO, or CD.

How It Works

Quick1X consists of two components, a hosted backend provisioning interface and a user-facing automatic configuration wizard. The provisioning interface is used by the network administrator to configure all of the required endpoint variables to create a Quick1X deployment package which is then installed on an IT owned web server.

The cloud hosted service component allows for IT administrators to receive updates, new configuration elements, and support for new supplicants in a timely manner. (Illustration 1)

The user only touches the configuration wizard that is presented via a captive web portal. A complete install and configuration log shows the end-user when the update is done. (Illustration 2)

What We Support

Supplicants:

- Windows native supplicant (Vista, XP, 7)
- Macintosh native supplicant
- iPhone/iPad native supplicant

EAP methods: (this is a universal set of all methods; some supplicants may not support all of these methods)

- PEAP [EAP-MSCHAPv2, EAP-GTC, EAP-TLS]
- EAP-TLS
- EAP-TTLS [all supported EAP and non-EAP inner methods]
- EAP-FAST [EAP-MSCHAPv2, EAP-GTC, EAP-TLS]
 - Out-of-band PAC provisioning

Summary

For many organizations, endpoint configuration is the most difficult part of deploying secure 802.1X authentication and authorization. Quick1X offers a painless solution that easily streamlines the process for organizations of all sizes to improve network access security, that is easy for users and the IT staff to use and manage.



Avenda Systems, Inc.
3255 Scott Blvd., Bldg. 2, Suite 102
Santa Clara, California 95054
408.748.0902
info@avendasys.com
www.avendasys.com
http://twitter.com/Avenda_Systems

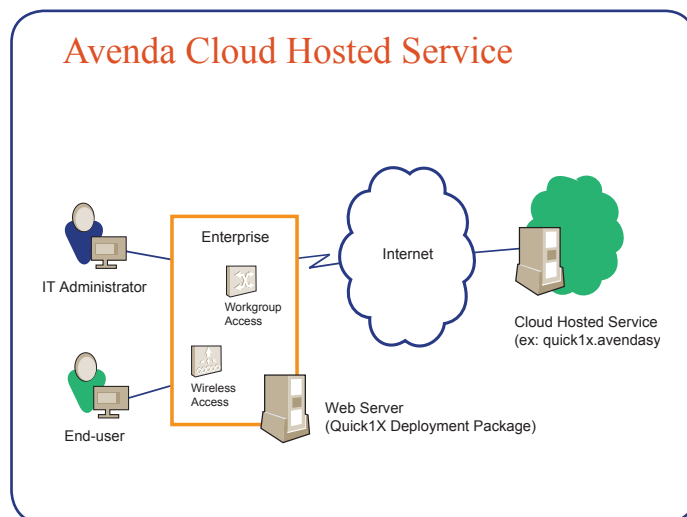


Illustration 1: Web based user and administrative Quick1X components

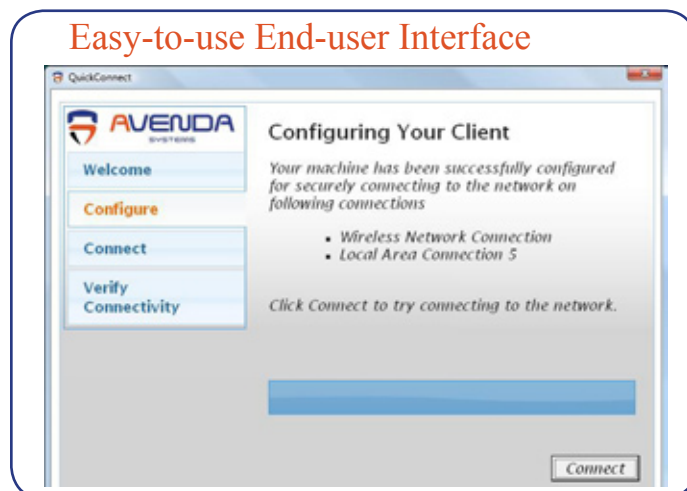


Illustration 2: Easy-to-use .1X endpoint configuration Wizard

More Information

Contact Avenda to learn more about Quick1X, and to schedule a product demonstration. Or visit: <http://quick1x.com>